

**Guthrie Tractor & Farm Equipment Auction 3/3/2023**

Smith & Co. Auction & Realty, Inc. is not responsible for any errors in bids, omissions of bids, or failure to execute bids and shall have no liability to any bidder for any technical or other failure associated with the internet. Payment is due immediately following the close of the auction. Bidder's credit card on file will be charged in full immediately following the close of the auction. There will be no options for refunds of any type. **ALL SALES ARE FINAL.** Visa and Mastercard accepted. Sales tax is applicable unless a valid, current sales tax permit is presented prior to auction. Announcements made sale day supersede all prior advertising. All items sold in their present condition with no warranties expressed or implied. Final responsibility rests with the buyer to assess the condition of items. It is not possible to adequately describe in text or photos an item that may show use and wear. We recommend you personally inspect all items, or enlist a trusted professional to do so on your behalf. Settlement must be made day of sale.

**LOT #**

**1 JD 4640 TRACTOR, DUALS, 3 PT, PTO, 3 HYD**

Showing 1,803 hours. Starts and runs good. AC needs freon once in a while.  
 Quantity: 1



**2 JD 4440 TRACTOR, 3 PT, PTO HYD.**

Rear Tires 18.4-38 = 80%. Woods dual front end loader 3100. Showing 7,575 hours. Recently replaced hyd. pump. Starts and runs good. AC needs work.  
 Quantity: 1



**3 JD 4630 TRACTOR, DUALS, 3PT, PTO, 2 HYD**

Showing 2,200 hours. Starts hard.  
 Quantity: 1



**LOT #**

**4 JD 450 DRILL, DOUBLE DISC, 6" SPACING, 13' BOX**

Dent on back of box - Does not effect operation  
 Quantity: 1



**5 JD 1508 BRUSH BEATER, 15'**

Left wing has broken Yoke. Seal leaking. Used in the last year.  
 Quantity: 1



**6 MAC DON A30-D SWATHER, GOOD RUBBER**

One bent reel.  
 Quantity: 1



**7 ROUND BAIL TRAILER 30'**

Frame appears bent.  
 Quantity: 1



**8 MF 2656A HESTON SERIES BALER, AUTO CYCLE, NET WRAP**

Good rubber. Troy says it's a good baler.  
 Quantity: 1



**9 1968 CHEVY 50, HYD BED, V8 ENGINE**

Single Axle, 39" Side Boards, 16' Bed, Steel Floor, Showing 60,009 miles, Runs after priming.



Quantity: 1

Guthrie Tractor & Farm Equipment Auction 3/3/2023

**LOT #**

**10 10' RIGID BRUSH BEATER, RHINO**

Has broken drive line.  
Quantity: 1



**11 RICHARDSON PICKERS, 3 SECTION, 5' - 6' - 7.5'**

Quantity: 1



**11a 5' Brush Beater**

Quantity: 1



**12 SQUARE SHAPED ROUND BALE FEEDER**

In good shape  
Quantity: 1



**12a Square Shaped Round Bale Feeder**

One side broken out- lower  
Quantity: 1



**13 23' PIPE FEED TROUGH**

Quantity: 1



**14 23' PIPE FEED TROUGH**

Quantity: 1



**15 23' PIPE FEED TROUGH**

Quantity: 1



**LOT #**

**15a 23' PIPE FEED TROUGH**

Top rail is ok  
Quantity: 1



**15b Square Shaped Round Bale Feeder**

Quantity: 1



**15c Square Round Bale Feeder**

EZ- Hay Feeder  
Quantity: 1



**16 16' SINGLE FOLD OFFSET DISC CRUST BUSTER, #3181**

Quantity: 1



**17 NECKOVER 6' x 16' GN STOCK TRAILER**

Wood Floor, Canvas / Bow Top, 1 Cut Gate  
Quantity: 1



**18 WILSON PORTABLE CORRALS**

Quantity: 1



**19 KRAUSE 24' TANDON DISC, DOUBLE FOLD,**

Front Disc 18" - Back Disc 20", Harrows (missing one section)  
Quantity: 1



Guthrie Tractor & Farm Equipment Auction 3/3/2023

**LOT #**

**20 KRAUSE 3500 SINGLE FOLD CHISEL 16'**

Quantity: 1



**21 FLEX-KING DOUBLE FOLD SWEEP PLOW, FOUR 5' SWEEPS**

Quantity: 1



**22 FLEX KING DOUBLE FOLD SWEEP PLOW w/ CUTTERS**

2 Sections of Pickers, Four 5' Sweeps

SN 004943

Quantity: 1



**23 MELRO 5 BOTTOM MOBOARD PLOW, SEMI MOUNT, w/CUTTERS**

Quantity: 1



**24 12' GRAHM HEME CHISEL w/ HARROWS**

Quantity: 1



**25 GREAT PLAINS SOLID STAND #13 DRILL**

Double Disc with Fertilizer Box

Quantity: 1



**26 CIRCLE D 20' GN STOCK TRAILER w/ FULL TOP**

Wooden Floor with Rubber Mats, 1 Cut

Gate

Quantity: 1



**LOT #**

**27 LANDAU BT-20LX PONTOON BOAT, 55hp SUZUKI**

Quantity: 1



**28 ARTIC CAT PROWLER XTX 700, SIDE BY SIDE, 4WD**

Quantity: 1



**29 PLASTIC 7' STOCK TANK, HASTINGS**

Quantity: 1



**30 2X BW FEED BUNKS 10'**

Quantity: 1



**31 SQUEEZE CHUTE w/ SELF CATCH HEADGATE**

Steel Floor, Good Condition

Quantity: 1



**32 10' STEEL CATTLE PANELS**

These will sell TIMES THE MONEY.

Quantity: 50



**33 10' Square Tubing Panels**

18 Panels- 4 have bent leg or broken bar

Quantity: 1



**34 J.D. Tractor Starter for 30 & 40 Series**

Quantity: 1



Guthrie Tractor & Farm Equipment Auction 3/3/2023

**LOT #**

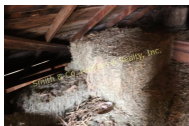
**35 Unused/New Guards for Swather**  
Quantity: 1



**36 Champion Generator 4000W**  
Needs Switch  
Quantity: 1



**37 Approx. 60 Small Alfalfa Square Bales**  
5+ Years Old. Located in Loft of Barn.  
Quantity: 1



**38 10 Square Bales of Straw Hay**  
Small Square in Upper Left Hand Side of the Barn.  
Quantity: 1



**39 Mayrath Drill Auger**  
Quantity: 1



**40 JOB Hot Gascan, Fan, New Disc, Hyd. Hose, Light, Small Air Compressor**  
Quantity: 1



**41 6" Auger**  
Quantity: 1



**42 6" Auger**  
Quantity: 1



**LOT #**

**43 Sliding Bed Cover for Chevy**  
Short bed Box, For Approx. 2014 Model  
Quantity: 1



**44 Post Driver**  
Gas Powered in Box  
Quantity: 1



**45 1993 F-150 XL 4x4**  
Auto, w/Cake Feeder. \*Not Running, NO TITLE\*  
Quantity: 1



**46 F-250 & 2 4-Wheelers**  
Scrap \*NO TITLES\*  
Quantity: 1



**47 2 Full Boxes of Baling Wire & 1/2 Box**  
Quantity: 1



**48 3 ROLLS OF STEEL CABLE**  
Quantity: 1



**49 PLASTIC WATER TANK**  
Quantity: 1



**50 PLASTIC WATER TANK**  
Quantity: 1



Guthrie Tractor & Farm Equipment Auction 3/3/2023

**LOT #**

**51 2 B&W ROUND BALE FEEDERS**

Need Repairs

Quantity: 1



**52 PLASTIC ROUND BALE FEEDER**

Quantity: 1



**53 15- 15' WIRE PANELS HD WIRE**

Quantity: 1



**54 APPROX. 18' PIPE GATE**

Quantity: 1



**55 PLASTIC WATER TANK**

Quantity: 1



**56 ATV SPRAY KIT WITH BOOM**

Quantity: 1



**57 25 GAL. SPRAYER**

Quantity: 1



**58 7 ROLLS OF ROUND BALER BELTS**

Quantity: 1



**LOT #**

**59 3 PLASTIC STORAGE BOXES**

Quantity: 1



**60 JACK STANDS, COPPER TUBING, FITTINGS, SPRAY BOOM**

Quantity: 1



**61 5 SPOOLS OF BALER TWINE**

Quantity: 1



**62 KRAUSE FOLDING LADDDER**

Quantity: 1



**63 2 - 25 GAL SPRAY TANKS (needs repair)**

Quantity: 1



**64 WOODEN STORAGE BOX**

Quantity: 1



**65 SMALL PLASTIC TOOL BOX, 2 GRINDERS**

1 - Skil 4.5" Grinder

1 - No Brand

Quantity: 1



**66 4 PLASTIC CONES**

Quantity: 1



Guthrie Tractor & Farm Equipment Auction 3/3/2023

**LOT #**

**67 7 FUEL CANS**

Quantity: 1



**68 DEER FEEDER PARTS**

3 - BODY OF FEEDERS

2 - MOTORS

2 - LEGS

Quantity: 1



**69 JOHN DEERE CS5 CHAIN SAW, GAS WEEDEATER**

Quantity: 1



**70 DOOR**

Quantity: 1



**71 ATV - 2 SEAT**

Quantity: 1



**72 CRAFTSMAN 6hp PUSH MOWER**

Quantity: 1



**73 CHEST**

Quantity: 1



**74 DELTA MILWAULKEE DRILL PRESS**

Quantity: 1



**LOT #**

**75 3400 PSI PRESSURE WASHER (not working)**

Quantity: 1



**76 4 ALLOY RIMS w/TIRES P275 / 60R17**

Quantity: 1



**77 SQUARE TUB SAW HORSES**

Quantity: 1



**79 DRILL PRESS SUPERIOR MACHINE TOOL (no belts)**

Quantity: 1



**80 GAS POWERED CATTLE SPRAYER 50 GAL**

Quantity: 1



**81 UWS SIDE TRUCK BED TOOL BOX**

Quantity: 1



**83 PIE SAFE**

Quantity: 1



**84 KENMORE UPRIGHT DEEFPREEZE, WORKING**

Quantity: 1



**85 VET GUN, STILL IN BOX**

Quantity: 1

