

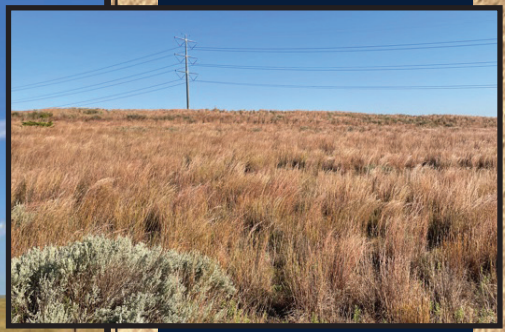
SMITH & CO
 Auction & Realty, Inc.
 1102 Oklahoma Ave.
 Woodward, OK 73801
580-254-3975
 Licensed in Oklahoma and Kansas

PR SRT STD
 U.S. Postage
 Paid
 Mooreland, OK
 Permit No. 7

Woodward Co.
LAND AUCTION
Wed., October 20th • 10 a.m.

Auction Location: Woodward Convention Center
 3401 Centennial Lane, Woodward, OK

Selling
3 Farms
Just South
of Woodward



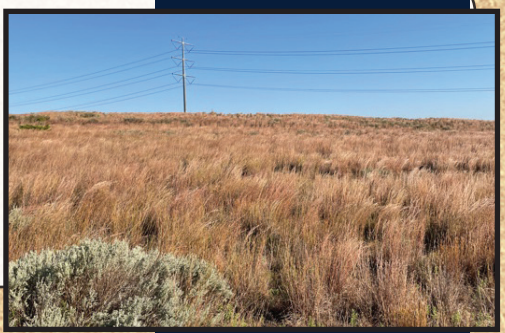
Seller: Bertha L. Lockhart Revocable Trust

Woodward Co.
LAND AUCTION
Wed., October 20th • 10 a.m.

Auction Location: Woodward Convention Center
 3401 Centennial Lane, Woodward, OK

551±
Acres
in 3 Tracts

REAL ESTATE Terms: 10% of purchase price escrowed sale day with the balance due upon proof of marketable title. Seller will provide a current abstract and a warranty deed. Taxes prorated to the day of closing. Possession upon closing. Property selling in its present condition with no warranties expressed or implied. All information given comes from resources we believe to be reliable but in no way is guaranteed. Announcements made sale day supersede all prior advertising. Buyers should arrange financing and satisfy themselves with size, location, boundaries, etc. prior to sale day. Sellers are reserving all oil, gas, and other mineral rights.



SMITH & CO
 Auction & Realty, Inc.
580-254-3975
 Auctioneer - Ira Y. Smith, ATS, R.E. Broker

follow us:

NAA Auctioneer EQUAL HOUSING OPPORTUNITY
 Licensed in Oklahoma and Kansas

"Serving NW Oklahoma and Kansas with Integrity and Pride since 1982"



TRACT 1 - 315.65± Acres

Legal Description:

NW/4, W/2 SW/4, NE/4 SW/4, NW/4 SE/4 of Section 5 T21N R21 W1M

Driving Directions:

From Hanks Trail & 34th St. (High Plains Tech) travel 6 miles south on 34th (CR 201), then 3 miles west on CR 48.

This tract has city water, a water well, and good county road access. The grass and trees provide opportunity for ample hunting.

TRACT 2 - 80± Acres

Legal Description:

W/2 NW/4 of Section 8 T21N R21 W1M

Driving Directions:

From Hwy 15 west of Woodward, travel 7 miles south on CR 198

With good native grass land and a water well on a mild rolling type terrain, this tract has lots of potential. Close to Woodward with good county road access on the west and north sides.

TRACT 3 - 156± Acres

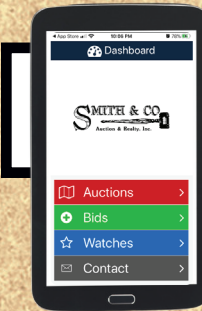
Legal Description:

NE/4 of Section 2 T21N R21 W1M

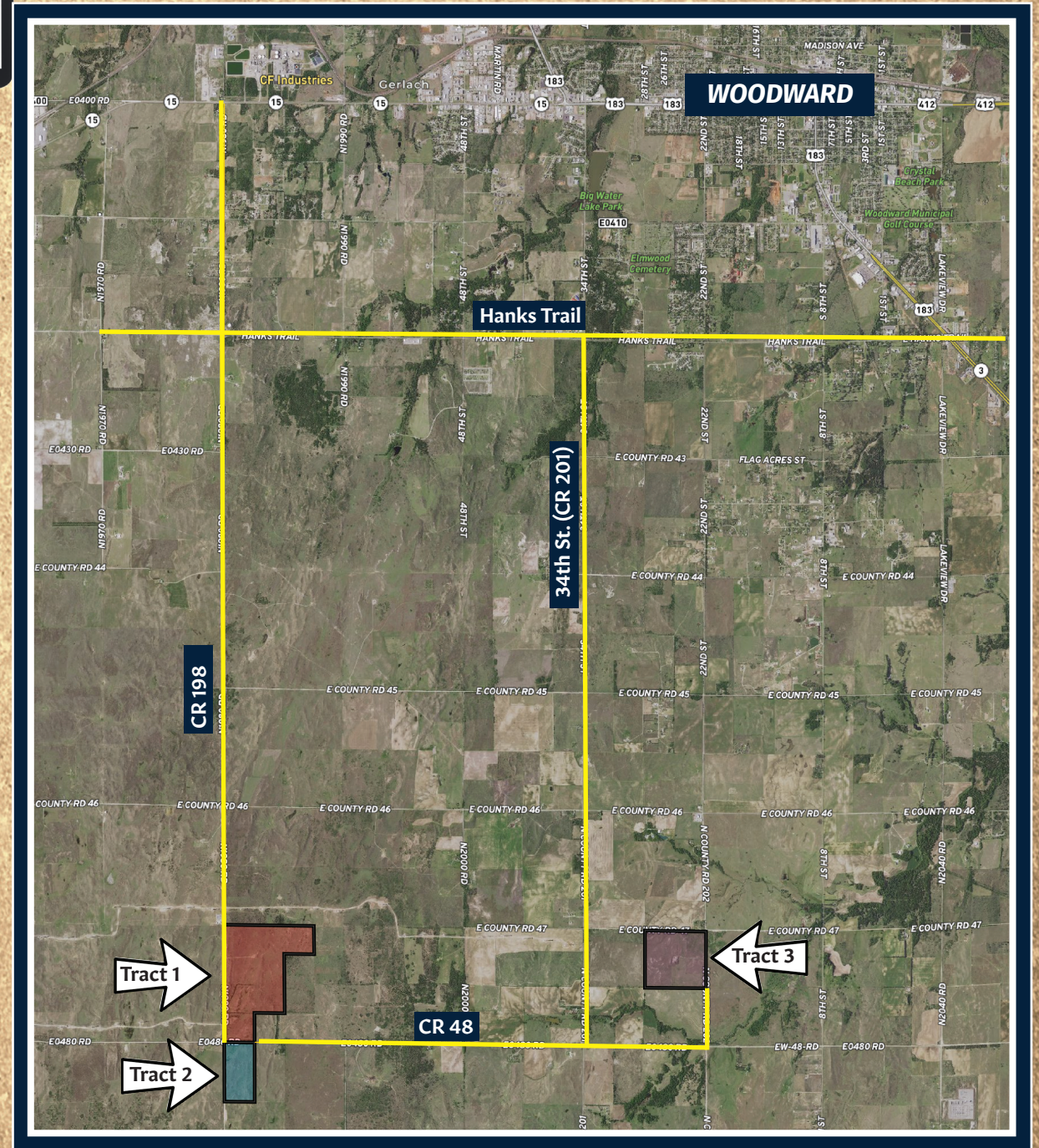
Driving Directions:

From Hanks Trail & 34th St. (High Plains Tech) travel 5 miles south on 34th (CR 201), then 1/2 mile east on CR 47.

This tract is fenced on all 4 sides and has good county road access on the east and north sides. The water well that feeds this tract is across the road therefore a water well is not included with this property.



Can't Be There? Bid Online!
Download our App OR Bid at www.smithcoauctions.com



To see this property or schedule a showing, please call or text Ira Smith 580-334-6001 or via email: ira@smithcoauctions.com

www.smithcoauctions.com

