



Auction & Realty, Inc.

SIMULCAST 2021 Fall Consignment Auction 9/25/2021

ALL ITEMS SOLD IN THEIR PRESENT CONDITION WITH NO WARRANTIES EXPRESSED OR IMPLIED. Settlement must be made at close of sale. Smith & Company Auction & Realty, Inc. has the right to withdraw any item in this auction.

REGISTRATION & BID NUMBER ACCEPTANCE: By registering and accepting a bid number online or at auction site, the bidder acknowledges they have received, read, understand, and agree to be bound by the terms and conditions of the auction posted online or at auction site.

ONLINE BIDDERS: Smith & Company Auction & Realty, Inc. is providing online bidding as an added service to bidders. By clicking the accept button online, you enter into a binding legal agreement with Smith & Company Auction & Realty, Inc. Your credit card number will be retained and charged for your purchases when you sign up for a bidder number. If an item is won, the retained credit card will be charged for the full amount, plus a 3% Buyer's Premium, immediately following the close of the auction. Bidder acknowledges and understands that internet service may or may not function correctly the day of the auction. Under no circumstances shall Bidder have any kind of claim against Smith & Company Auction & Realty, Inc. or anyone else if their internet service fails to work correctly before or during the auction.

PAYMENT: Payment is due in full at the close of the auction. Smith & Company Auction & Realty, Inc. accepts cash, checks, Visa and Mastercard. Purchases cannot be removed from the auction site until paid for in full.

BUYERS PREMIUM: A 3% buyer's premium will be added to the total receipt amount when bidding online.

SHIPPING: We DO NOT provide shipping. Please ensure you have the ability to pick-up items BEFORE you bid.

ITEM PICK-UP: The buyer is solely responsible for removal of their own purchases. Items may be picked up on Auction day, following the close of the auction. ALL ITEMS SHOULD BE PICKED UP NO LATER THAN WEDNESDAY, SEPT. 29 by 5:00 P.M.

LOT #

LOT #

1 ANTIQUE MOBILE OIL, LUBESTER



1a JOHN WAYNE COMMEMORATIVE HONDO STAGECOACH

JW-29657, 32-40 Caliber



2 STEVENS CRACK SHOT MODEL 26, .32ca



3 J.C. MODEL 583-1101 SEARS & ROEBUCK, 16ga.



4 SILC INC. - NEW YORK, BLACK POWDER, .50cal, #74243



5 REMINGTON MODEL 660, .243 WIN w/ SCOPE #6270471



6 CVA BLACK POWDER, .50cal, #006515



SIMULCAST 2021 Fall Consignment Auction 9/25/2021

LOT

7 ARMI SPORT - ITALY .44cal, BLACK POWDER #44471



8 BROWNING 10ga MODEL 28 PUMP
Signed Michael Collins, Made in Japan
#22172NR192



9 REMINGTON MODEL 11-48, 16ga, #5517168



10 REMINGTON MODEL 11-48, 12ga., #5046660



11 REMINGTON MODEL 11-48, 28ga, #4029741



12 REMINGTON MODEL 11-48, 20ga., #5861502



13 TRADITIONS - SPAIN .50 BLACK POWDER #200138



14 FAB NATIONAL .32cal HANDGUN
Browning Patent Depose, Semi Auto



LOT

15 BEAMON PELLET RIFLE



16 ROSSI .22cal. PUMP RIFLE MODEL 62SA
w/ Hex Barrel



17 LANRER O/U .12ga w/ACU TRIGGER, SILVER-LITE,
LB 310926 12/70, Like new



18 WINCHESTER MODEL 70 .338 WIN MAGNUM
w/ Leupold Scope



19 SAVAGE MODEL 10, .308, FLUTED BARREL
J079636 w/ Crossfire 3x9x40 Scope



20 POINTER 20ga SHOTGUN SEMI AUTO, YOUTH
MODEL
Legacy Sports, Reno NV



21 GAMO BIG CAT 1250 fps AIR RIFLE



22 V-350 SLIDE ACTION B-B AIR RIFLE CROSSMAN
ARMS USA



SIMULCAST 2021 Fall Consignment Auction 9/25/2021

LOT #**23 760 PUMP MASTER BB GUN****24 UBERTI MODEL 1873 .45 COLT - STOEGER NRA#574****25 KEL-TEC PMR-30 #WW8M79, 22WMR w/ 2 CLIPS****26 MARLIN MODEL 925M, 22 WIN-MAG, #92630505****27 M&P 45 AUTO, 2 CLIPS, SN JBV6584****28 SPRINGFIELD XD-9, 9mm, 6 MAGS, SN 53649248****29 RUGER M77, MARK 2, 7mm REM MAG, TASCO SCOPE**

SN 784-49764

**30 HOWA MODEL 1500, 6.5 CREEDMORE**

w/ Diamond Nikko Sterling Scope

4x16x50

SN 549315

**LOT #****31 HERITAGE ROUGH RIDER .22 REVOLVER**

SN 1BH248959

**32 BARKEEP HERITAGE .22 REVOLVER**

SN 1BH360542

**33 HERITAGE ROUGH RIDER .22 REVOLVER**

SN 1BH243437

**34 CHIAPPA MODEL 1873-22, 22 LR/MAG**

SN 19C04678

**35 HERITAGE ROUGH RIDER .22 REVOLVER**

SN 1BH164938

**36 HERITAGE ROUGH RIDER .22 REVOLVER**

SN 1BH011490

**37 REMINGTON MODEL 1100 LT 20ga**

2 Barrels, Mod, Short Full, SN N087002K

**38 WINCHESTER MODEL 12, 12ga. PUMP SN 402501****39 RUGAR REDHAWK REVOLVER, .41cal MAG,**

Pachmeyer Grips, SN 50258332



SIMULCAST 2021 Fall Consignment Auction 9/25/2021

LOT #**40 RUGAR P-89, 9mm, SEMI AUTO, SN 307-80886****41 SAVAGE 6A, .22 SEMI AUTO GILL GUN****42 WINCHESTER MODEL 94, 30-30, LEVER ACTION**
SN 5642050**43 FEG PA 63 .9mm MAK SEMI AUTO PISTOL,**
HOLSTER,
2 Clips, SN HA9179**44 HERITAGE ROUGH RIDER .22 MAG, HOLSTER**
SN H260245**45 GLOCK MOD 22G 40cal S&W, SN DAB884****46 THOMPSON / CONTENDER TC, .223, REDFOLD 4X**
SCOPE
SN 108358**47 CROSMAN, MARKSMAN REPEATER .177****LOT #****48 DAISY, HEDDON MODEL 30-30 BUFFALO BILL**
SCOUT
BB cal., Vintage**49 RUGER MODEL 10-22, .22cal, TASCOSCOPE**
SN 23191391**50 NORTH AMERICAN ARMS .22MAG**
SN E362590**51 H&R .22, SN AU190704****52 GAMO .177cal BULL WHISPER****53 BOYT GUNCASE, Like new, Unused****54 AUSTIN & HALLOCK 50cal BLACK POWDER**
Like new, Never loaded**55 ITHACA MODEL 800 12ga O/U SN 55600166**

SIMULCAST 2021 Fall Consignment Auction 9/25/2021

LOT #**55a CRICKET YOUTH .22 LR****56 WINCHESTER MODEL 70 300 VIN MAG**

SN G2302325 w/ Leupold Vari x3
6.5 - 20 x 50 mm Scope

**56a Cricket 22 Rifle****57 DOUBLE BARREL SHOTGUN W/SCOPE**

J Stevens A&T Co, Chicapee Falls Mass.
USA

**58 FLINTLOCK SHOTGUN #410****85 2005 RANGER 700, 4X4**

Nice Unit, Runs Good,
Showing 870 hours

**86 2019 POLARIS SPORTSMAN 570, FUEL INJECTED, AWD**

VIN 4XASEA573KA629682
Showing 116 Miles
Showing 12.8 Hours

**87 DIXON MOWER, 13.5hp MOTOR, 30"****LOT #****88 2003 POLARIS 500 HIGH OUTPUT SPORTSMAN, 4x4**

Cold Blooded, Hung in Reverse,
VIN 4XACH50A9-B-95495
Showing 1334 hours

**89 2005 POLARIS SPORTSMAN 500, AWD,**

Leak in Right Front Tire, Runs Good
VIN 4XAMH50A75A629487
Showing 956 hours, 6516 miles

**91 KAWASAKI BAYON 300**

Starts & Runs Good

**92 2001 POLARIS RANGER 4X4**

Showing 882 hours

**93 SUZUKI 4 WHEELER, QUAD RUNNER**

Showing 2331 hours

**94 HUSTLER MOWER, 54" FASTRAK**

Less than 2 years old & under 75 Hours,
Smokes a little when first started,
Starts and Runs Good

**95 HUSTLER FASTRACK 36", KOHLER MOTOR**

Very Clean, Runs Good
Model 927343
SN 08091310



SIMULCAST 2021 Fall Consignment Auction 9/25/2021

LOT #

96 JOHN DEERE MOWER

Hood Broke on one side
SN M0L180K035194
Showing 297 Hours



97 SNAPPER ZERO TURN MOWER

SN 2016394178



98 KUBOTA RTV 1100, bad motor, #22088



100 4020 JOHN DEERE KYKER FRONT END LOADER

like new, Hoses good, Tractor runs good,
No engine problems, Hydraulics good, Not
fast but powerful.



101 2005 TN70 TRACTOR w/ 32LC FRONT END LOADER

Excellent condition
1615 Hours



104 2016 TR 310 SKID LOADER, TRACKS

Starts and Runs Good, 74hp, Showing
1871 hours
JAFTR310TGM419631



105 FORD TRACTOR FWA w/ FRONT END LOADER

PTO will not engage, Showing 1396 Hours



LOT #

105a 6' 3pt BRUSH BEATER, MODEL SE6 BY RHINO



106 613C SCRAPER, 1996, CAT

Starts and Runs Good, Lots of like new
hoses, 1 tire like new, like new radiator
Showing 6,364 miles
SN 92X00692



107 MEYERS TREE MACHINE AUXILLARY SPRAYER

Starts and Runs, DSL Engine, Refrig Air,
Spray Also
Showing 390 Hours



108 1980 MELROSE SPRA COUPE

GPS, Electric Boom Activators, Like New
Clutch & Carburetor, Starts & Runs, Has a
Squeak,
Showing 1194 hours



109 9N FORD TRACTOR

Started & Runs, NO BATTERY



109a 9N FORD TRACTOR

Started & Runs, NO BATTERY



110 WALKER ASPHALT RD11A 3' STEEL WHEEL ROLLER

Gas, Starts and Runs
SN 5031202



SIMULCAST 2021 Fall Consignment Auction 9/25/2021

LOT #

- 111 2002 NOMAD 28' TRAVEL TRAILER**
VIN 1SN300N292C000783



- 112 25' GOOSENECK FLATBED**
20' Deck & 5' Dove Tail



- 113 COOKER / SMOKER TRAILER**



- 114 1975 CHEVY 2 TON, ROLLOVER TARP, ALMOST NEW TIRES**

10.0 - 20 Tires Lots of Tread, Drill Fill Auger, Good Truck, Comes from Local Seller
VIN CCE675V132428
Showing 38,039 miles



- 115 2012 JAYCO SWIFT 145 CAMPER**
Very Good Condition
VIN 1UJBJOAG2C17C0184



- 116 2004 GULFSTREAM TRAVEL TRAILER, MAKO 27'**
VIN 1NLIMFM2141061813



- 117 MILLER BIG 40 WELDER, ON TRAILER**
45' Wedling Leads, Gas, Starts & Runs



- 118 BOBCAT HYD. TREE SAW, LOW FLO ONLY**
SN 005500156



LOT #

- 119 FORK LIFT, YALE, MODEL GC050-BBNNAT-077**
Runs, Lifts, Tilt is not moving
SN #P322420
Showing 6685 Hours



- 120 1971 LN 700, 391 GAS, 5 SPD, 2 SPD AXLE**
Both Outriggers need packed C material to do so come with track
4T47 Model Crane - National
Many general aspects of crane rebuilt
Jib goes 81'
Showing 53,148 miles



- 121 1998 FREIGHT LINER BUSINESS CLASS, 3126 CAT MOTOR**

Tires have roughly 300 miles on them
Engine driven air compressor
Juice Brakes
Showing 184,106 miles
VIN 1FV3GJAC5WH971579



- 122 2016 DODGE JOURNEY CROSSROAD, AWD**
4 Door Wagon/Sport Utility, 3.6L V6 24V, Front Wheel Drive, MPG 17 City / 25 Hwy, Vehicle declared total los by insurance company on 06/22/2019
Salvage Title / Rebuilt Title
Showing 40,618 miles
VIN 3C4PDCGG9GT158387



- 123 2013 FORD ESCAPE SE, AWD**
Good Conditions, Starts & Runs Good, 4 Door Wagon / Sport Utility 1.6L 16V
Vehcile involved in sideswipe collision with another motor vehicle (damage to right front, damage to right side, airbags did not deploy) minor damage severity. Manufacturer buyback or lemon reported 05/07/2014
VIN 1FMCUOGX7DUB13796
Showing 84,005 miles,



SIMULCAST 2021 Fall Consignment Auction 9/25/2021

LOT #

124 2011 F250 LARIAT 4x4, CREW CAB, 6.25 BED, DSL

Starts and runs good, Doesn't use oil, A/C
Leaks (needds recharged)
Showing 195,070 miles



125 1998 CHEVY 1 TON DUALY w/ FLAT BED, 2WD, GAS,

Standard Transmission
VIN 1GBHC34RGWFO46866
Showing 137,482 miles



126 2012 CHEVY 1/2 TON, 4X4, GAS,

Starts & Runs Good
VIN 1GCNKPE00C2136209
Showing 102,595 miles



127 1980 JEEP CJ5, 4X4, WINCH, STANDARD, GUN RACK

VIN JOM83AC028366
Showing 356 miles



128 2011 FRAC TANK

VIN 255904



128a 2013 FRAC TANK

VIN 272845



129 2011 CHEV 2500HD, EXT. CAB, GAS ENGINE, BUTLER BED

4 x 4, Engine sounds rought under a load
Tires 30-340%
Exhaust Leak, Starts and Runs
Showing 248,310 miles



LOT #

130 1994 F-350, 4 DOOR, UTILITY BED, 4X4, DSL 7.3

From Local Fire Dept., Starts and runs
VIN 1FTJW36M8REA13142
Showing 127,184 miles



131 1985 CADILLAC FLEETWOOD

Starts & Runs
VIN 1GGCB698XF4281991
Showing 176,794 miles



132 1991 CADILLAC SEDAN DEVILLE

Won't stay running, fuel issues perhaps
VIN 1GGCD53B9M4207452
Showing 212,060 miles



133 2004 OLDSMOBILE

Starts and Runs
VIN 1G3NL52F34C122156
Showing 185,652 miles



134 2003 TOYOTA SEQUOIA LIMITED, 2WD

Starts & Runs, A/C is Hot
VIN 5TDZT38A735172203
Showing 249,412 miles



135 2001 TOYOTA SEQUOIA SR5, 2WD

Good A/C, Starts & Runs, New Battery,
Has a short that drains the battery,
VIN 5TDZT34A525073433
Showing 242,390 miles



SIMULCAST 2021 Fall Consignment Auction 9/25/2021

LOT #

136 2002 TOYOTA SEQUOIA SR5, 2WD

Starts and Runs, 4 Door Wagon / Sport Utility, 4.7L V8 32V, Accident reported 10/23/2004 no info
VIN 5TDZT34A225075480
Showing 237,523 miles



137 2012 KIA SEDONA LX

Starts and Runs
3.5L V6 24V, No reported issues
VIN KNDMG4C72C6491377
Showing 217,305 miles



138 2008 DODGE CARAVAN SE VAN

Starts and Runs
3.3L V6, Accident reported 02/24/2016 vehicle involved in a side swipe collision with another motor vehicle (damage to right side, vehicle functional)
VIN 2D8HN44H58R670013
Showing 265,242 miles



138a 2006 F-150, 2WD, AUTO, GAS

Starts and Runs
VIN 1FTRF12W06NA19611
Showing 189,111 miles



139 2004 FORD F-150

Starts and Runs
VIN 1FTRX12294NC32986
Showing 276,913 miles



140 2010 KIA SEDONA

Starts and Runs
VIN KNDMG4C75B6370678
Showing 194,729 miles



LOT #

140a 2014 HONDA CRV, AWD

Starts and Runs Good, From Local Seller
Serviced every 5k miles, Maintenance Log
VIN 5J6RM4H72EL007021
Showing 271,950 miles



141 2001 LAND ROVER, 4 x 4, AUTO, DISCOVERY EDITION

All Elec., All Leather, V-8, with Like New Motor Mounts, Driveline, Tranny Mounts, All Fluids
Issues: No Brakes, Transfer Case Stopped Shifting (may be sensor)



142 1992 WHITE CHEVY PICKUP 4X4, not running

Cake Feeder & Bale Spikes
Showing 157,090 miles



142a 2001 HONDA GL1800 GOLDWING, UPGRADED SPEAKERS

Extra Chrome & LED Lights, Full Tarp w/Bike, Remote Locks, After market pipes, Runs great
VIN 1HFSC470X1A004183



143 21' ADJUSTABLE CATTLE ALLEY



143a 2009 F-150, GAS, 2WD AUTO

VIN 1FTRF12W19KB98070
Showing 103558 miles



SIMULCAST 2021 Fall Consignment Auction 9/25/2021

LOT #**144 16' CATTLE GUARD****144a SILENCER HYDRAULIC SQUEEZE CHUTE****145 1999 DODGE 2500 4X4 5spd, with 6spd FLYWHEEL**

Dual Disc Valair, 100% Injectors
VIN 3B7KF226XXG128451
Showing 350,141 miles

**146 TOPHAT TRAILER, 12' X 6.5'**

Pipe Rails, Dovetail Ramp, Brakes,
Bulldog Hitch, 8 Welded Tie Down D
Loops, ST 205/75D15 LRC Tires &
Custom Wheels, Spare Tire, Welded
Enclosed Lights, 3500lb x 2 Dual Axles,
Pulled less than 200 miles total

**146a 1999 FREIGHTLINER WINCH TRUCK**

Auto, Almost new tires, Winch rarely used,
Water tank w/ gas motor, 12 valve
Cummins
VIN 1FV6HLBA2XH951942
Showing 163,200 miles

**147 2006 NORRIS 82x20, STEEL FLOOR, RAMPS, 7K AXLES**

VIN 1N9LB2024GC007B37

**148 3250 CADMAN HOSE REEL IRRIGATION SYSTEM**

SN 25295123250

**LOT #****149 48' VAN TRAILER**

Title & Ready to Go

**150 1340 HESSTON SWATHER**

SN 134000783

**151 530 JOHN DEERE ROUND BALER, STRING TIE**

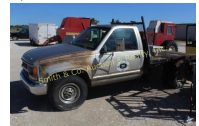
Field Read Control Boy & Manual
SN E0053028961

**152 AERATOR****153 KRAUSE 15' CHISEL w/18" SWEEP, DRILL HITCH**

MODEL 2813, SN 1310, Excellent Shape

**153a 2 TON FEED HAULER****154 15' SCHAFER DISC NEW BEARINGS 20" DISC****154a 2000 CHEVY 3500, GAS, 2WD, AUTO, FLATBED**

VIN 1GCGC34R6YR150993
Showing 188,332 miles



SIMULCAST 2021 Fall Consignment Auction 9/25/2021

LOT #**155 18' SUNFLOWER CHISEL**

Like new cylinder and hoses, SN 74471

**156 24' SPRINGTOOTH w/LIKE NEW TIRES & HOSES**

SN 2012

**157 3C CREEP FEEDER****158 20' MILLER DESK****158a RED SINGLE AXLE UTILITY TRAILER w/ RAMP****159 1014 HESTON SWATHER, SN 0069**All Bearings like new except crimper
Field ready**160 14' OFFSET DISC****161 ALLMAND LIGHT TOWER, SN 0089PR006**

Showing 579 Hours

**LOT #****162 ALLMAND LIGHT TOWER, SN 0092PR006**

Showing 535 Hours

**163 KENT SPRINGTOOTH 28'****164 LAND LEVELER****165 SPRINGTOOTH & EXTRA TEETH****166 CASE 4 BOTTOM MOBOARD****167 1500LB CROWN LINE CAKE FEEDER**w/ Electric Chute on Counter, 1 yr old,
Like New**167a 2,000 LB 3C CAKE FEEDER****168 ROTOMEC PHD 400 3 POINT DIGGER**w/ Extension on 12" Auger, Like New
SN 1XFPHD0XJM0378516

SIMULCAST 2021 Fall Consignment Auction 9/25/2021

LOT #**169 KING KUTTER 3PT TILLER**

MODEL TG-60-YK

SN 1001772003

**170 CAKE FEEDER****171 SKID STEER CRAPPLE****172 KWIK WEY SKID STEER BLADE, MODEL 35-12600**

SN 6300-17

**173 SKID STEER TILLER****174 GRAVES 3 BALE SPEED MOVER**

Electric Hydraulic, Field ready

**175 EQUIPMENT TRAILER, 14' DECK, 3' DOVE, RAMPS**

4 Axle, Old Style Rims, Pendulum Hitch

**176 24' PANELS****LOT #****177 24' PANELS****178 24' PANELS****179 24' PANELS****180 24' PANELS****181 24' PANELS****182 24' PANELS****183 24' PANELS****184 24' PANELS****185 24' PANELS w/ 12' GATES**

SIMULCAST 2021 Fall Consignment Auction 9/25/2021

LOT #**186 24' PANELS w/ 8' GATES****187 PORTABLE SQUEEZE CHUTE, SN 8111790****188 1964 TRUCK, GRAIN SIDES**

327 Engine, 2nd Rear End

VIN 4L6635194513

Showing 81,910 miles

**188a 1981 INTERNATIONAL WHEAT TRUCK**

Runs Good, Speedometer not Working,

Hyd. Lift on Bed,

Drill Fill Auger on Back

Showing 40,136 miles

**189 GEHL 1310 ROUND BALER, SN 20536****190 WW SQUEEZE CHUTE ON WHEELS****191 SEMI END DUMP TRAILER, lift works****192 1990 CHEVROLET 53 PASSENGER BUS, GAS**

Showing 90,281 miles

VIN 1GBG6PIP7LV105728

**LOT #****192a WW 2001 16' STOCK TRAILER, BUMPER PULL**

VIN 11WHS162X1W261017

**193 2002 GMC 47 PASSENGER BUS, DSL, CAT MOTOR**

VIN 1GBG7T1C81J513761

Showing 112,565 miles

**194 2004 CHEVY 3/4 TON, 4x4, SPIKE w/ FEEDER,**

Starts and Runs

EX 4 DOOR, VIN 1GCHK29U14E143000

Showing 226,040 miles

**195 POWDER RIVER SQUEEZE CHUTE****196 2000 GULFSTREAM**

VIN #1NL10TM24Y1040214

**196a DROP FRAME TRAILER for MOTORCYCLES****197 5' X 10.5' UTILITY TRAILER, STEEL FLOOR**

w/ Removable Rack

**198 1987 5 WHEEL CAMPER (CLASSIC)**

VIN 1K232AR18HD348051



SIMULCAST 2021 Fall Consignment Auction 9/25/2021

LOT #**198a 2007 WILSON CATTLE POT, 50' x 102"**

Crank Up Nose, Good Tires, Like New
Brakes, Air Ride,
Title & Road Ready

**199 200gal. SPRAY RIG w/ BOOMS****200 TRAILER w/ RAMP & WATER TANK****201 2 WHEEL TRAILER****203 MASTER TOW CAR DOLLY**

VIN 4DFBT1015KN134578

**204 16' STOCK TRAILER****205 BOAT TRAILER for 24' BOAT**

New Winch & Oil Hubs - 3500# Axles
VIN 4JEBE242551255511

**207 UTILITY TRAILER w/ RAMP, 5K AXLES**

Needs 1 Hub assembly

**LOT #****209 2005 KENWORTH SEMI, Not Running, Fuel Tank Gone**

Diesel Cummins Engine
VIN 1XKWD49XX5R076192
Showing 413,850 miles

**210 WELDING TRAILER****211 8' TRAILER****212 PICKUP BED TRAILER****213 QUICK HITCH for 3PT, CATEGORY I****214 DRILL HITCH for IMPLEMENT, HOMEMADE, BOLTS ON 3PT****215 WW 6 x 16' STOCK TRAILER, FULL TOP****216 NEW HOLLAND 650 AUTO TIE ROUND BALER**

Been shedded, Nice Unit
SN 916562



SIMULCAST 2021 Fall Consignment Auction 9/25/2021

LOT #

217 199 ENCLOSED TRAILER 6 X 16

Bill of Sale Only

VIN 11WEC1625XW245249



218 ENCLOSED TRAILER

Bill of Sale Only



219 SEMI FLOAT TRAILER

220 2007 GMC 2500, EXT CAB

4WD (Control is Missing), Good Tires,
A/C is Cold, Drivers Side Door Closes
Hard, Panel says 'Service 4WD',
VIN 1GTHK29K07E567268
Showing 153,848 miles



221 CATTLE WORKING CHUTE

w/ Cow Gate and Alley Way and 10 WW
Panels



222 CATTLE WORKING CHUTE w/ PANELS