

320 ±
Acres

WOODWARD COUNTY Land Auction

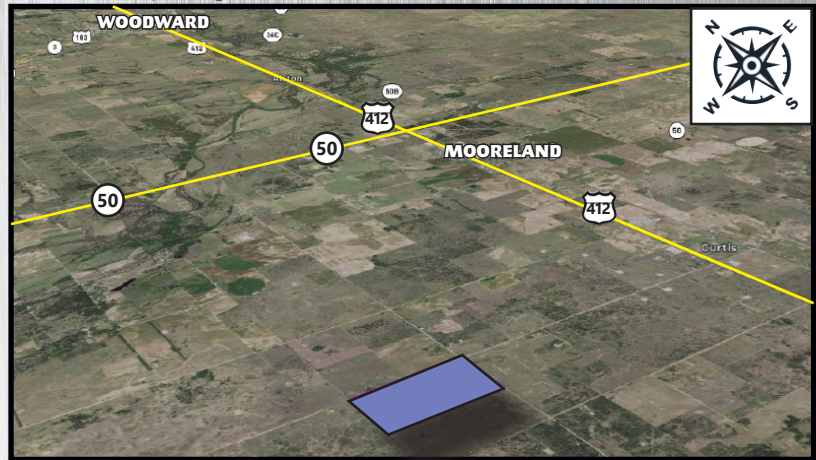
Wed., July 14th 10 a.m.

Smith & Co. Auction Facility, Hwy 412
West Side of Mooreland, OK

Land Location:

From Mooreland, OK go 4 miles east on Hwy 412 then south 3 miles on CR 217 to the NW/4 of the property.

Seller: Betty Gingrich



Legal Description: The W/2 of Section 16T 22N R18 W1M.

This 320± acres has good county road access on the west and north sides. There is a water well and native grass with **excellent hunting potential**. The fences are good and there is a **water well** and **electricity**.

For more information or to schedule a showing contact Ira Smith at 580-334-6001 or ira@smithcoauctions.com.

SMITH & CO

Auction & Realty, Inc.

580-254-3975

Auctioneer - Ira Y. Smith, ATS, R.E. Broker



“Serving NW Oklahoma and Kansas with Integrity and Pride since 1982”



Auction & Realty, Inc.

1102 Oklahoma Ave.
Woodward, OK 73801

580-254-3975

Licensed in Oklahoma and Kansas

PR SRT STD
U.S. Postage
Paid
Mooreland, OK
Permit No. 7

320[±]
Acres



WOODWARD COUNTY
Land Auction

Wed., July 14th 10 a.m.

Smith & Co. Auction Facility, Hwy 412
West Side of Mooreland, OK

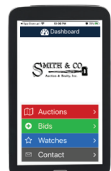
follow
us:



REAL ESTATE Terms: 10% of purchase price escrowed sale day with the balance due upon proof of marketable title. Seller will provide a current abstract and a warranty deed. Taxes prorated to the day of closing. Possession upon closing. Property selling in its present condition with no warranties expressed or implied. All information given comes from resources we believe to be reliable but in no way is guaranteed. Announcements made sale day supercede all prior advertising. Buyers should arrange financing and satisfy themselves with size, location, boundaries, etc. prior to sale day. Sellers are reserving all oil, gas, and other mineral rights.

**3 Convenient Ways
To Bid!**

- Bid in Person
- Bid by Phone
- Bid Online!



For more information call
our office at **580-254-3975!**

www.smithcoauctions.com