

# AUCTION

**Saturday, June 8th • 10 a.m.**

**Tractors • Seed Harvesting Equipment • Implements**

**Auction Location: 1 mile south of Sharon, OK on Hwy 34 & 1¼ miles east on County Road 52**

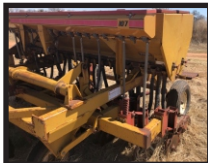
## TRACTORS

- Massey Ferguson 50, DSL, 3pt, PTO
- John Deere 7410 FWA w/Koyker 545 Loader, 3pt, PTO, Power shift, Shows 1198 hours
- Ford TW35, 3pt, Good Rubber, PTO, Hyd.
- Case 1070 w/Dual 3100 Front End Loader, 3pt, PTO, Hyd.
- Case 970, 3pt, PTO
- Antique Case VAC w/Wide Front End
- Case VAC for Salvage, no front end
- 2 - Case IH 1680 Combine (one has locked up engine)
- JD 8760 4WD Tractor, RWS9041003796, Showing 9,529 hours



## TRAILERS

- 24' GN Flatbed, Tandem Duals, w/Dove Tail
- 30' GN Stock Trailer with 3/4 Top
- 2012 Lamar #10401 22' Bumper Pull Flat Bed
- 18' Flatbed Trailer
- 30' Header Trailer



## ATV's

- 800 Polaris 4-Wheeler

## Trucks & Pick-Ups

- 1958 Chevrolet Truck, Steel Bed w/ Hydraulic Lift
- 2003 Dodge 1 Ton 4x4, Duals, DSL, Crew Cab, Showing 312,683 miles
- Chevrolet Winch Truck w/ Tulsa Winch
- 1979 F-250 w/Steel Flat Bed, 4x4
- 2-Chevrolet Pick-ups w/ Steel Beds (salvage)

## IMPLEMENTS

- 30' Sunflower Double Fold Offset Disc
- 6" x 24' Auger on Wheels, Elect.
- 6-5' Section of Flex Harrow
- 15' Batwing Beater / Mower
- King Kutter 500 Fertilizer Spreader, 3pt, PTO
- 24' Rotary Hoe, 3pt, w/Spring Loaded Shanks
- 7 Shank Big Ox
- 14' Rotary Hoe
- 42' Harrow
- 12' Offset Krause
- 12' Dirt Mover
- 3pt Post Hole Digger
- Vermeer Hay Buster
- 30' Krause Tandem Disc
- Dempster Fertilizer Spreader, PTO
- John Deere 671 Hay Rake Set
- Great Plains Solid Stand 30' Drill, Double Disc w/Liquid Fertilizer
- John Deere 1600A Hydraswing Swather, needs repair
- 30' Field Cultivator w/Harrows
- 20' Ripper w/Cutters, "The Mulcher"
- Krause Chisel, Double Fold
- 24' Krause Chisel Model 742
- Draper Header for JD Swather
- Dempster Fertilizer Spreader, rusted
- Packer 2500 Grain Cart
- Anhydrous Tank on Trailer
- Liquid Fertilizer Tank on Trailer w/Hydraulic Pump
- 8' John Deere 3pt Chisel
- Hay Buster Grass Drill w/3 Boxes, Model 107, SN 851313
- 10' Bush Hog Beater, Pull
- 5' Brush Beater
- Dual Front End Loader
- 3pt Quick Hitch
- Balespike for Loader



## EQUIPMENT

- PTO Mist Blower w/Tank
- PTO Driven Hammer Mill w/Elevator
- Feed Grinder w/2 Hp Elec. Motor
- Irrigation Gun
- Rye Wick
- Hay Rake
- Gehl Mix-all Grinder
- 200 Gal. Fuel Tank w/Fill-Rite 12v Pump
- 1000 Gal. Tank on Tandem Axle Trailer w/Gas Engine & Pump
- Slide-in Sprayer w/Gas Engine



## SEED HARVESTING EQUIP

- Grass Seed Harvester, attaches to Front End Loader/Hyd. Motor, PTO Pump & Reservoir
- 12' Hutch C300 Seed Cleaner with Loading Auger
- Hood for Seed Broom
- Ag Renewal Seed Reclaimer Model 86-12
- 5-Cotton Trailers converted to Seed Dryer w/18" Fans & 8' x 24' Sides
- Krimpet 8' for Grass Seed, Straight Disc, 3pt
- 8'x24' Drying Trailer, no sides
- Drying Trailer



## MISCELLANEOUS

- John Deere 316 Riding Mower
- 8'x12' Storage Shed
- 2000 Gal. Fuel Tank on Skid
- 1000 Gal. Fuel Tank on Stand
- Horizontal Tank, no skid

**Seller: Walter Adams**



**580-254-3975**

**Auctioneer - Ira Y. Smith, ATS, R.E. Broker**

**follow us:**



**"Serving NW Oklahoma and Kansas with Integrity and Pride since 1982"**



**SMITH & CO**  
Auction & Realty, Inc.  
1102 Oklahoma Ave.  
Woodward, OK 73801  
**580-254-3975**  
Licensed in Oklahoma and Kansas

PRSRT STD  
U.S. Postage  
Paid  
Mooreland, OK  
Permit No. 7

# AUCTION

**Saturday, June 8th • 10 a.m.**

**Tractors • Seed Harvesting Equipment • Implements**



## Auction Location

**1 mile south of Sharon, OK on Hwy 34  
& 1¼ miles east on County Road 52**

### AUCTION TERMS AND CONDITIONS:

Buyers attending this auction will be required to provide a valid photo ID. By registering, bidder agrees to all terms and conditions as set forth by Smith & company Auction & Realty, Inc. All items will be sold in their present condition with no warranties expressed or implied. Final responsibility rests with the buyer to assess the condition of items. It is not possible to adequately describe in text or photos any items that may show use and wear. We recommend you personally inspect all items or enlist a trusted professional to do so on your behalf. There will be no options for refunds of any type.

**ALL SALES ARE FINAL.** Cash, check, and most major credit cards accepted. Sales tax is applicable unless a valid, current sales tax permit is presented prior to auction. Announcements made sale day supercede all prior advertising.

**ONLINE BIDDERS** may bid via our website at [smithcoauctions.com](http://smithcoauctions.com). Smith & Company Auction & Realty, Inc. is not responsible for any errors in bids, omissions of bids, or failure to execute bids and shall have no liability to any bidder for any technical or other failure associated with the internet. A 3% Buyer's Premium will be charged to the On-line Buyer's high bid.

### **3 Convenient Ways To Bid & Buy!**

Bid in Person

Bid by Phone

Bid Online!



**For more information call  
our office at 580-254-3975!**

**ON-LINE REGISTRATION MUST BE COMPLETE AT LEAST 24 HOURS PRIOR TO SALE DAY.**